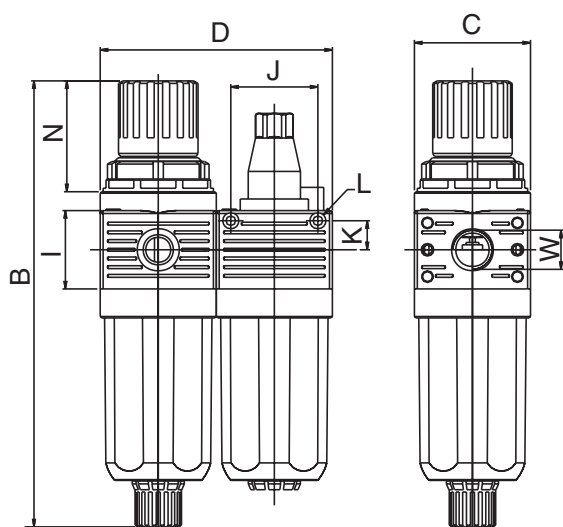
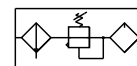


Mini Filter Regulator and Lubricator sets

3.2

page 3

**Main features***Filter regulator:*

Rolling membrane regulation valve with secondary air bleed, admission pressure compensation, without intrinsic consumption, with detend-stop adjusting knob, condensate collector with filter cartridge, filter element 20 μm – others on request, please refer to page 3.14 – semi-automatic condensate discharge.

Lubricator:

Direct-proportional lubricator, recommended types of oil: Mineral oils of viscosity class VG 22 a (ISO 3448).

Recommended consumption: 1-2 drops / m^3 air.

Technical information

| | |
|----------------------------|-------------------------------------|
| Operating pressure in p1: | Max. 15 bar at 20° C |
| Operating pressure out p2: | 0 bar ... 12 bar, others on request |
| Operating medium: | Compressed air |
| Operating temperature: | -10° C ... +50° C |
| Installation positioning: | Vertical |
| Materials: | Body and Shell: Technopolymer |
| | Gaskets: NBR |
| | Filter: Sintered bronze |
| | End parts: Die-cast zinc |

| | |
|--|--------------|
| Pressure gauge (included in delivery): | |
| Accuracy class: | 1,6 |
| Diameter: | 40 mm |
| Connecting thread: | G 1/8" |
| Indicator range: | 0 ... 12 bar |

FRL-0

| | |
|---|-----------|
| A | |
| B | 156 |
| C | 40 |
| D | 80 |
| J | 30 |
| K | 9,25 |
| L | D X M3 |
| W | 1/8"-1/4" |

| Family | Port Size | Flow Rate q_{nN}^* | Bowl Capacity | Part Number |
|----------|-----------|----------------------|--------------------|------------------|
| Mini (0) | G 1/8" | 260 l/min | 17,5 cm^3 | FRL-0-1/8 |
| Mini (0) | G 1/4" | 260 l/min | 17,5 cm^3 | FRL-0-1/4 |

* Measured at $p_1=10$ bar, $p_2=6$ bar, $\Delta p=1$ bar according to CETOP RP 50P